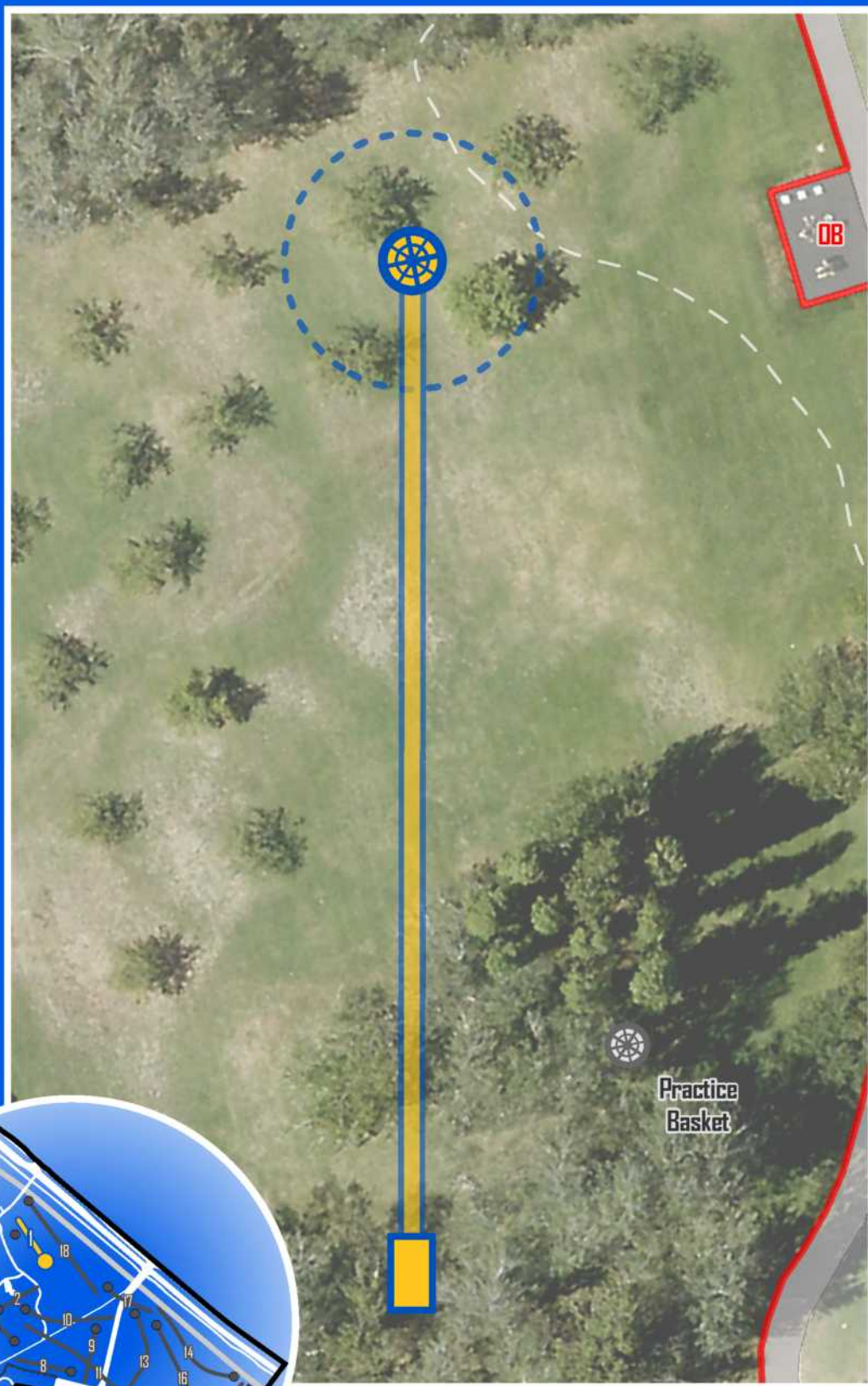


EDDISON PARK

DISC GOLF COURSE



Par 3

77m



ACT DISC GOLF CLUB

www.actdiscgolfclub.com

EDDISON PARK

DISC GOLF COURSE



2

Par 3

71m

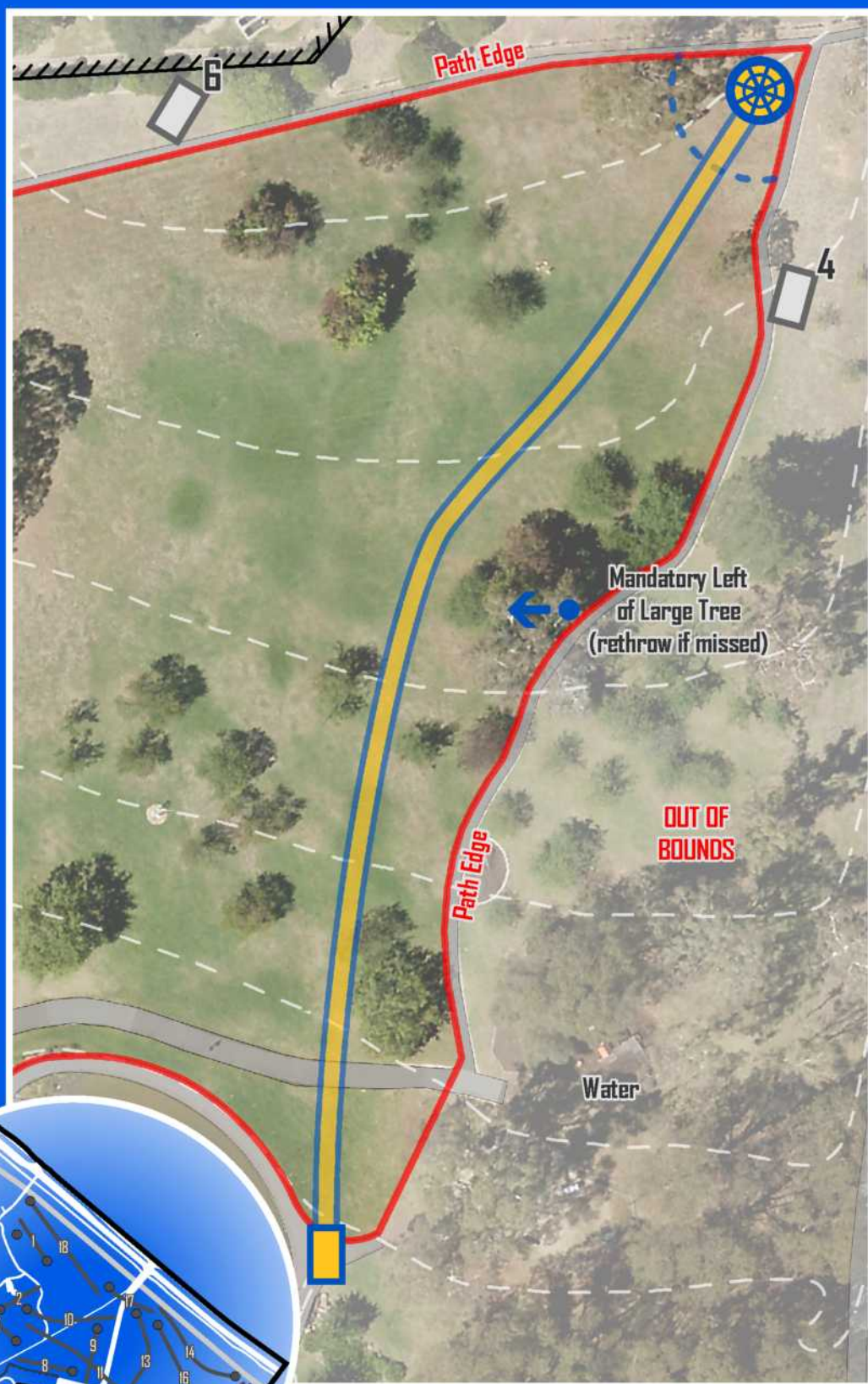


ACT DISC GOLF CLUB

www.actdiscgolfclub.com

EDDISON PARK

DISC GOLF COURSE



3

Par 4

142m



www.actdiscgolfclub.com

DISC GOLF COURSE

EDDISON PARK



4

Par 3

81m

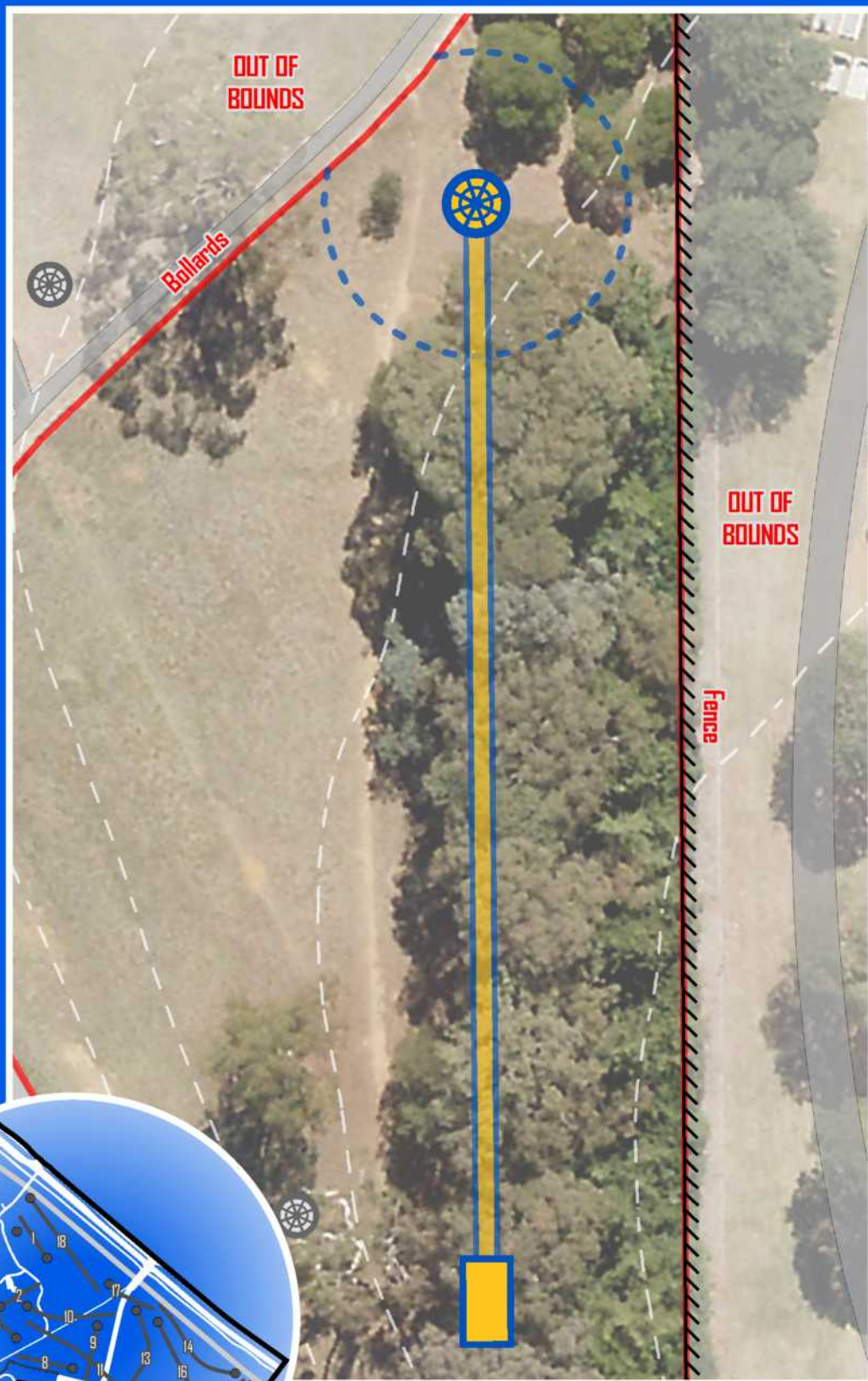


ACT DISC GOLF CLUB

www.actdiscgolfclub.com

EDDISON PARK

DISC GOLF COURSE



55

Par 3

70m

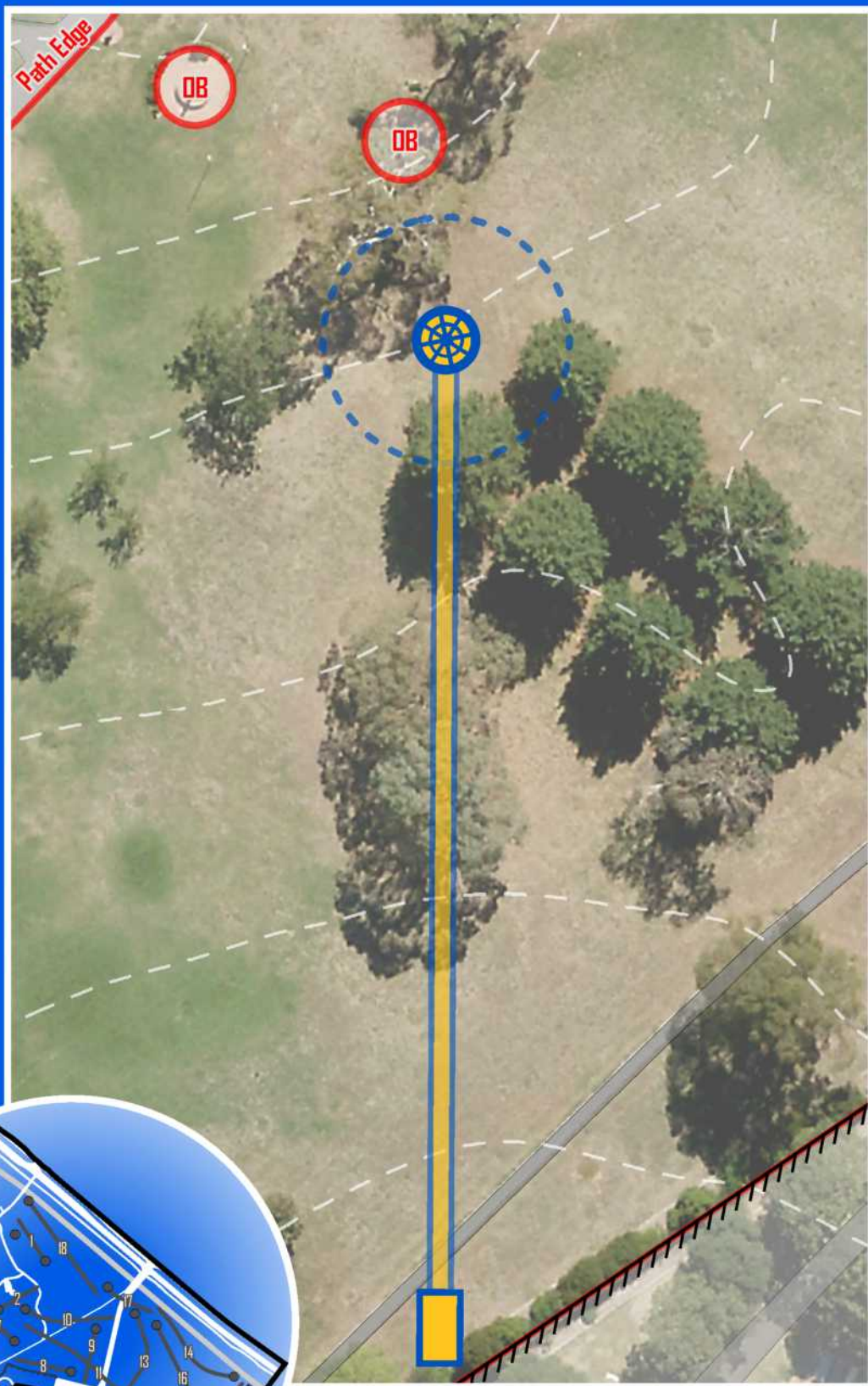


ACT DISC GOLF CLUB

www.actdiscgolfclub.com

EDDISON PARK

DISC GOLF COURSE



6

Par 3

78m

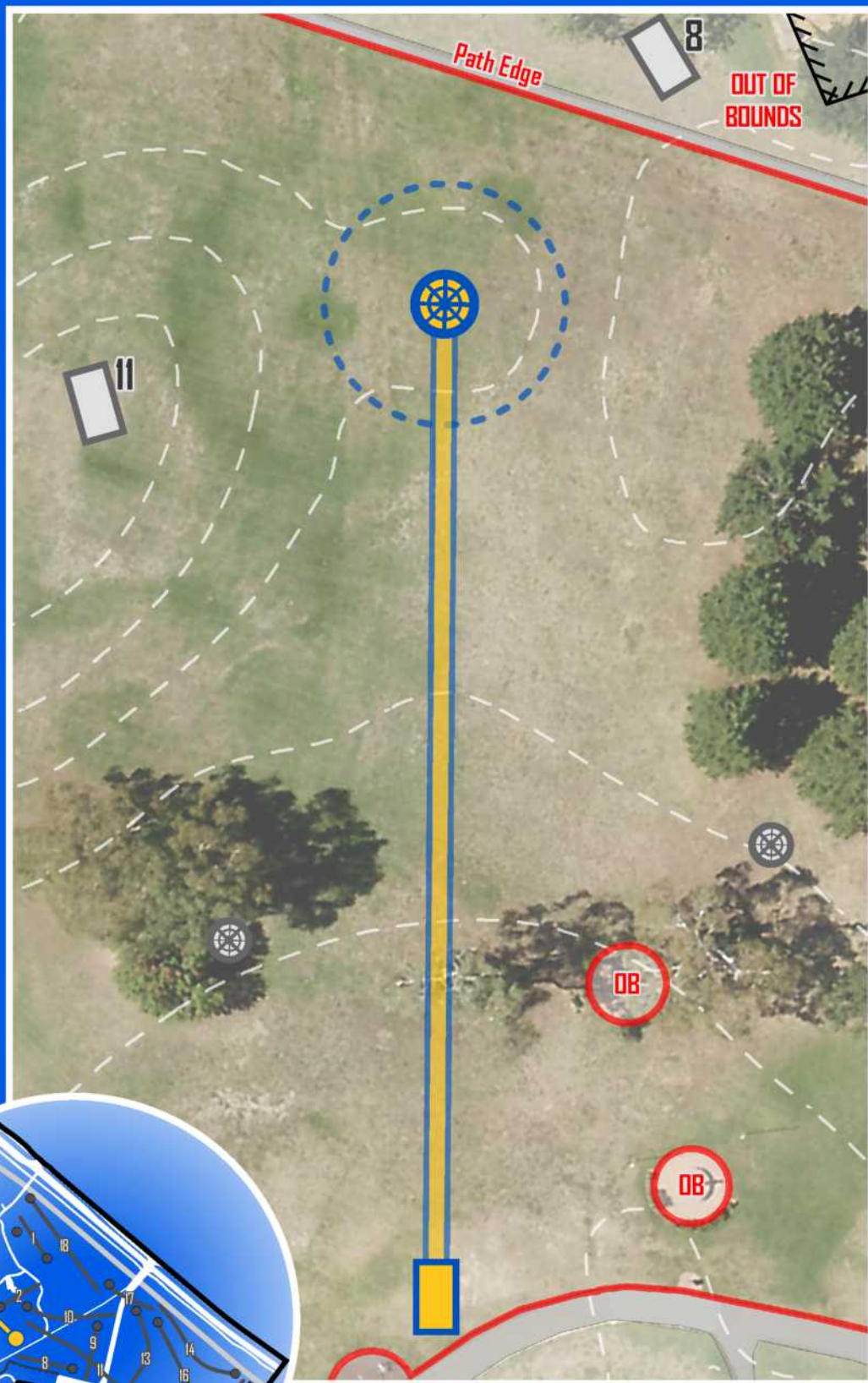


ACT DISC GOLF CLUB

www.actdiscgolfclub.com

EDDISON PARK

DISC GOLF COURSE



7

Par 3

80m



ACT DISC GOLF CLUB

www.actdiscgolfclub.com

EDDISON PARK

DISC GOLF COURSE



8

Par 3

85m



ACT DISC GOLF CLUB

www.actdiscgolfclub.com

EDDISON PARK

DISC GOLF COURSE



9

Par 3

85m



ACT DISC GOLF CLUB

www.actdiscgolfclub.com

EDDISON PARK

DISC GOLF COURSE



10

Par 4

140m



ACT DISC GOLF CLUB

www.actdiscgolfclub.com

EDDISON PARK

DISC GOLF COURSE



11

Par 5

261m

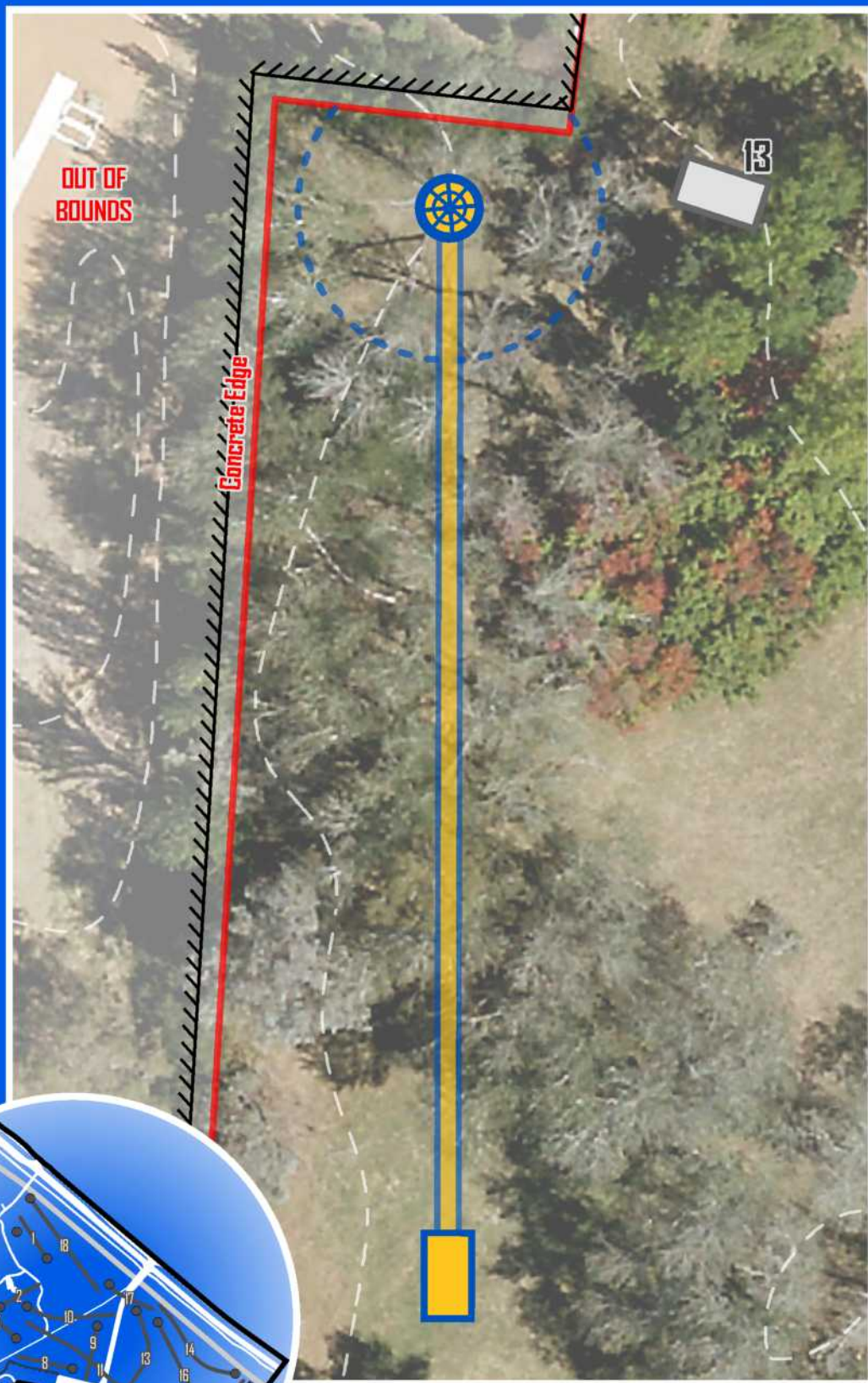


ACT DISC GOLF CLUB

www.actdiscgolfclub.com

EDDISON PARK

DISC GOLF COURSE



12

Par 3

68m



ACT DISC GOLF CLUB

www.actdiscgolfclub.com

EDDISON PARK

DISC GOLF COURSE



13

Par 4

158m



ACT DISC GOLF CLUB

www.actdiscgolfclub.com

EDDISON PARK

DISC GOLF COURSE



14

Par 4

169m



ACT DISC GOLF CLUB

www.actdiscgolfclub.com

EDDISON PARK

DISC GOLF COURSE



15

Par 3

66m

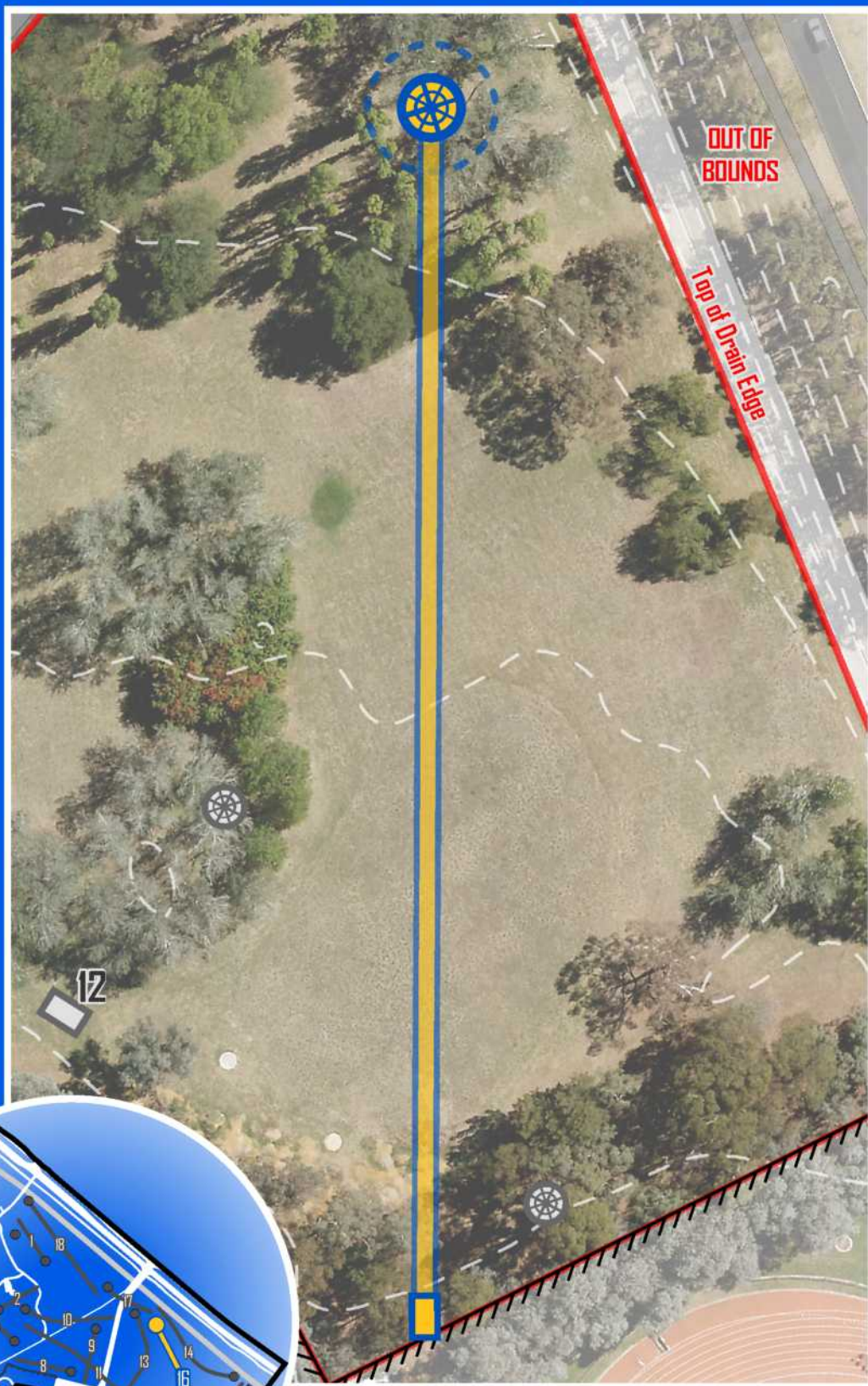


ACT DISC GOLF CLUB

www.actdiscgolfclub.com

EDDISON PARK

DISC GOLF COURSE



16

Par 4

186m



ACT DISC GOLF CLUB

www.actdiscgolfclub.com

EDDISON PARK

DISC GOLF COURSE



17

Par 3

79m



ACT DISC GOLF CLUB

www.actdiscgolfclub.com

DISC GOLF COURSE

EDDISON PARK



18

Par 4

180m



ACT DISC GOLF CLUB

www.actdiscgolfclub.com

PGA EVENT

SPRING SLING



SAT 15 OCT
2 ROUNDS
EDDISON PARK



**Eddison Park
Gold 1.0
Par 60 2199m**



Hole 1

Par 3 99m

Notes:

OB drain on left and path on right. Exercise equipment area also OB.

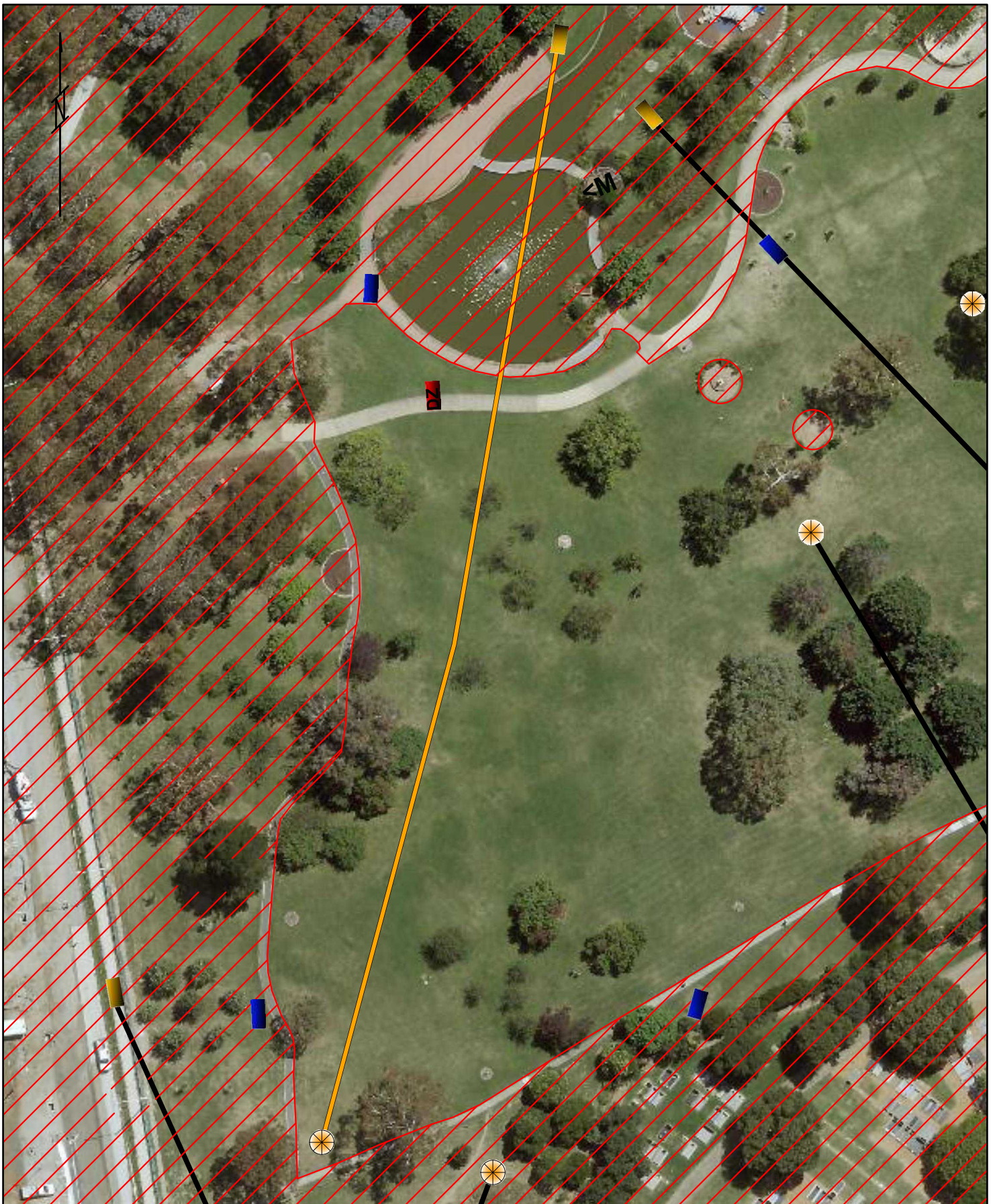


Hole 2

Par 3 93m

Notes:

Mandatory left of sign post. DZ next to sign.

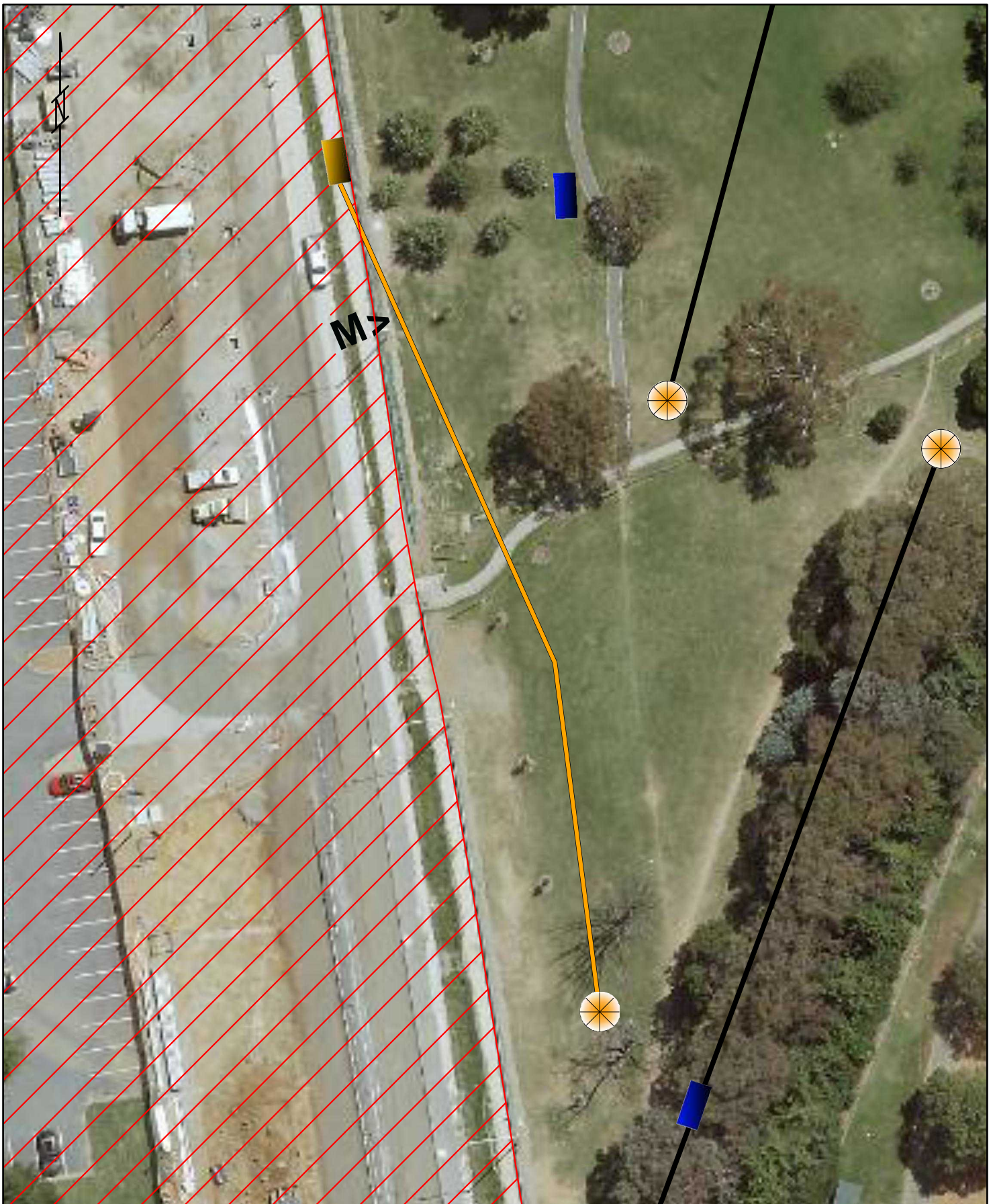


Hole 3

Par 4 183m

Notes:

1. Throwing to an island from the tee. Disc must come to rest inbounds off the tee. If not proceed to the drop zone with one penalty throw.
2. You may choose not to throw and proceed directly to the DZ with 2 penalty throws.

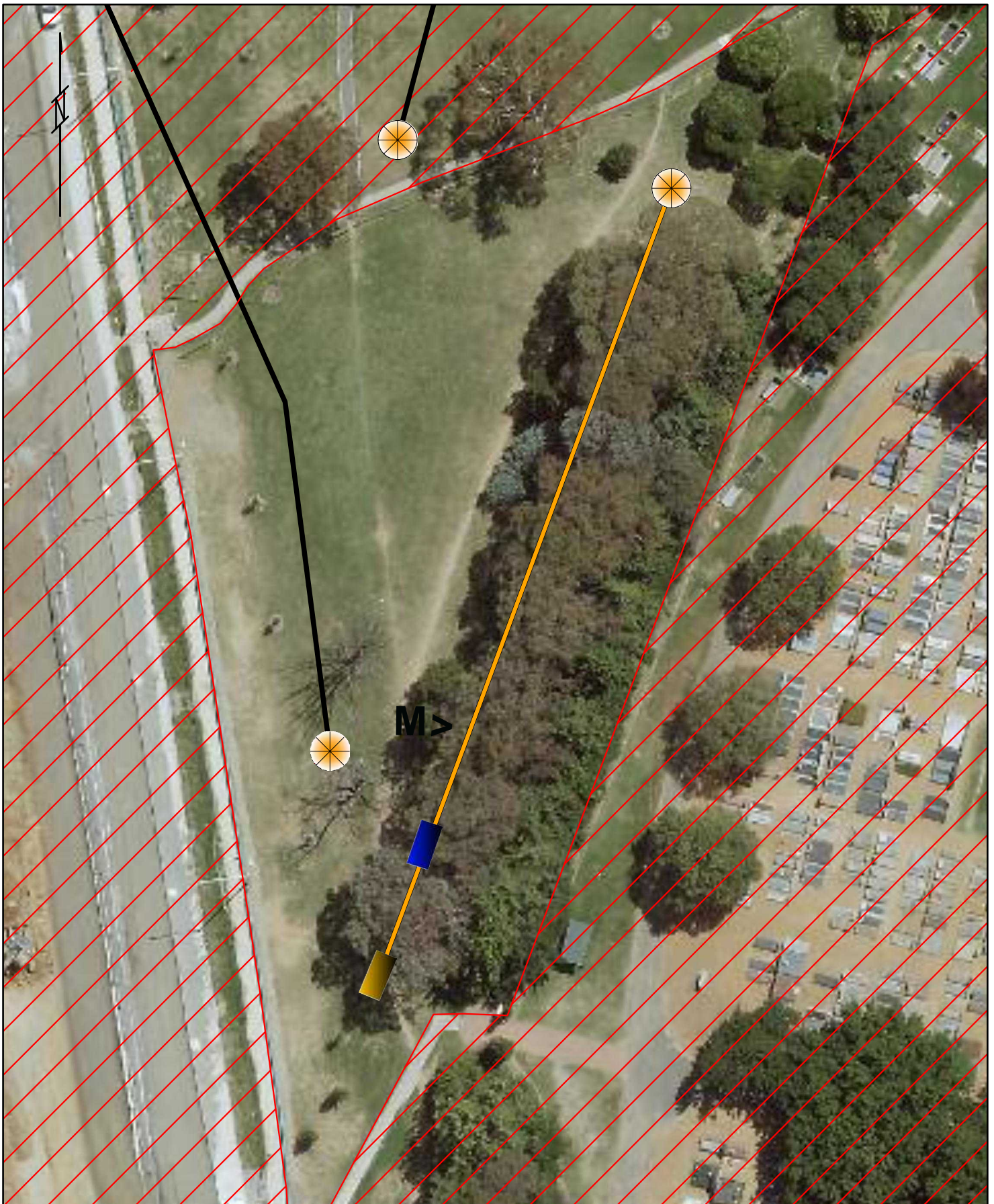


Hole 4

Par 3 90m

Notes:

**Mandatory light pole. Must pass to the left.
DZ next to pole.
OB path on right.**



Hole 5

Par 3 84m

Notes:

OB Fence on right. OB bollards long and left. Mandatory right of first tree on left of tunnel of trees. DZ from blue tee, mando not in play from DZ.



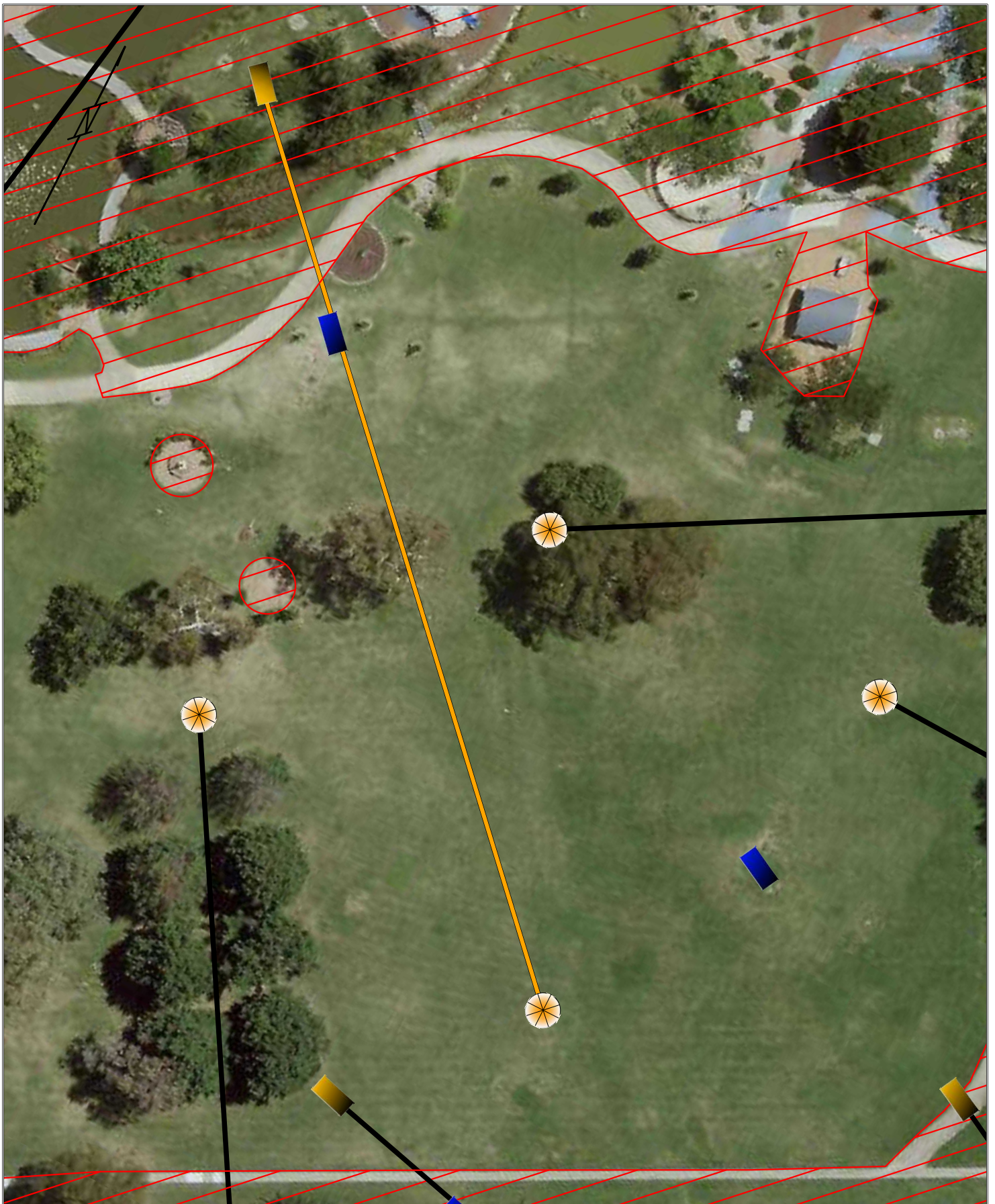
Hole 6

Par 3 62m

Notes:

10m Island is safe. Everwhere else plays as a hazard. Play it where it lies and take 1 penalty stroke.

Memorial circles behind island are OB. Normal OB rules apply if come to rest on one of these.

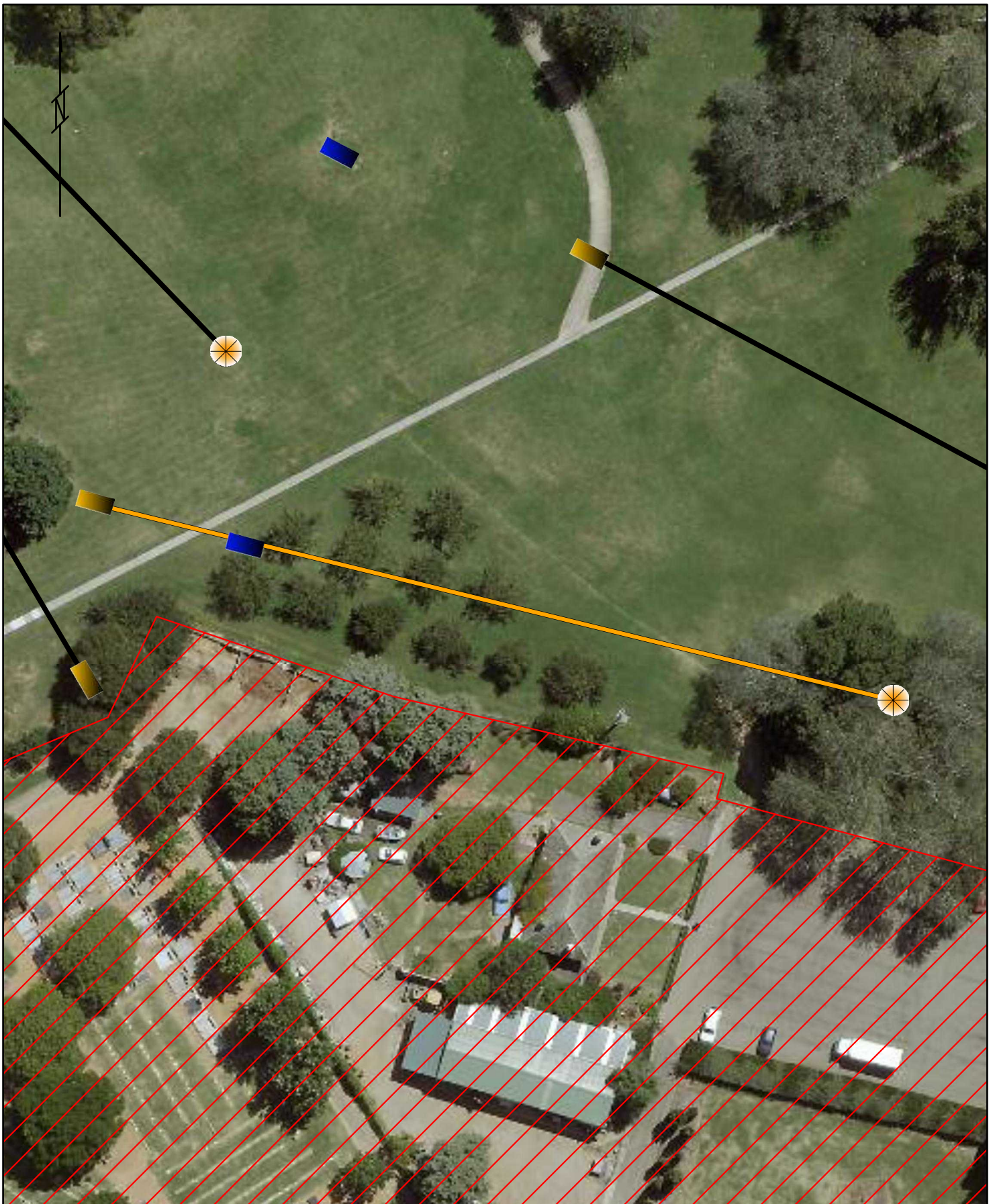


Hole 7

Par 3 110m

Notes:
Throwing to island. Must come to rest on island.
If OB take 1 penalty stroke and head to blue tee
for DZ (normal OB rules if on memorial circles).

OB path long of basket. OB memorial paved
circles. Spotter required on path just in front of
tee.

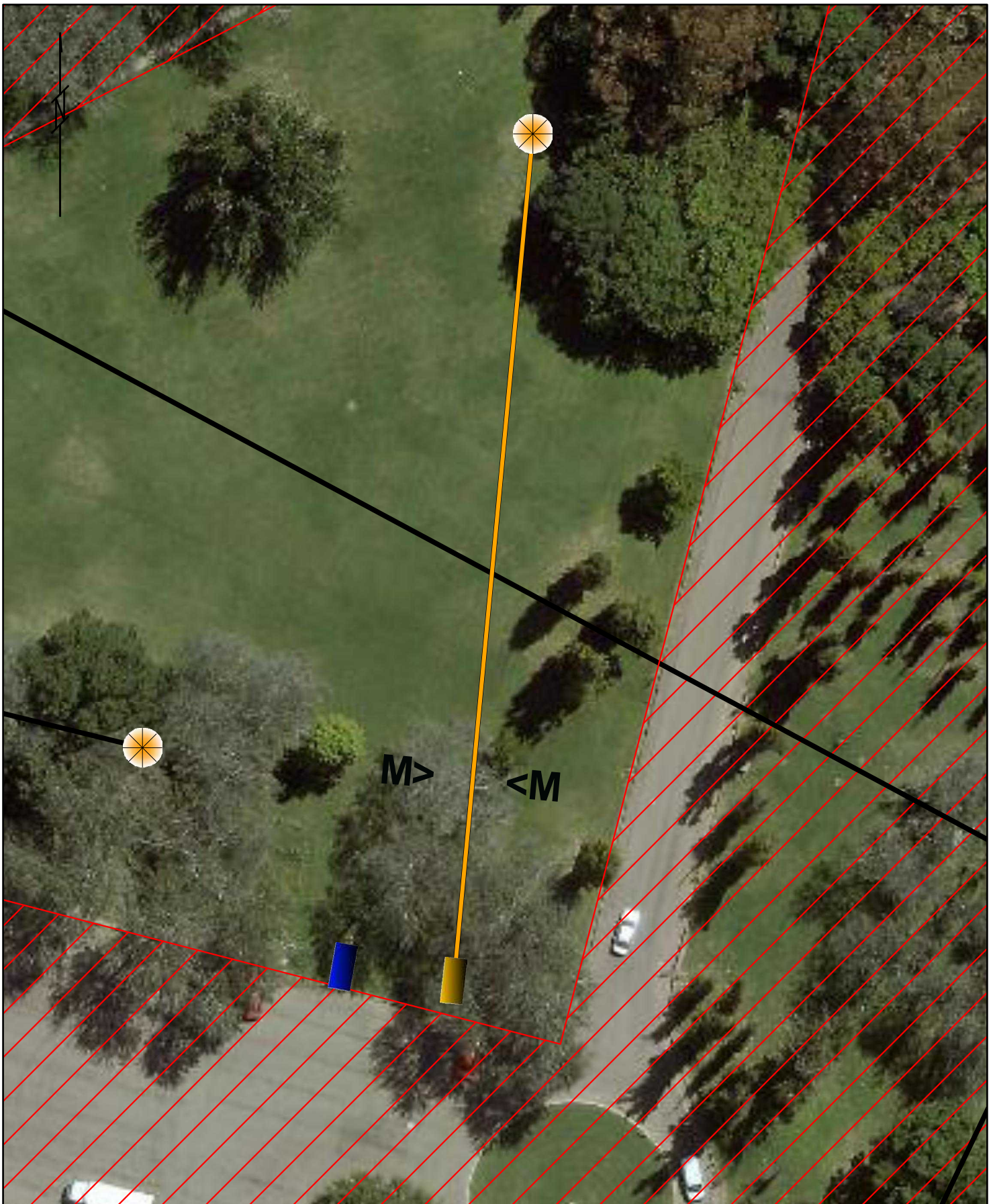


Hole 8

Par 3 106m

Notes:

OB Fence along right of fairway.
OB inside line of bollards at carpark.
Bollard line joins fenceline.



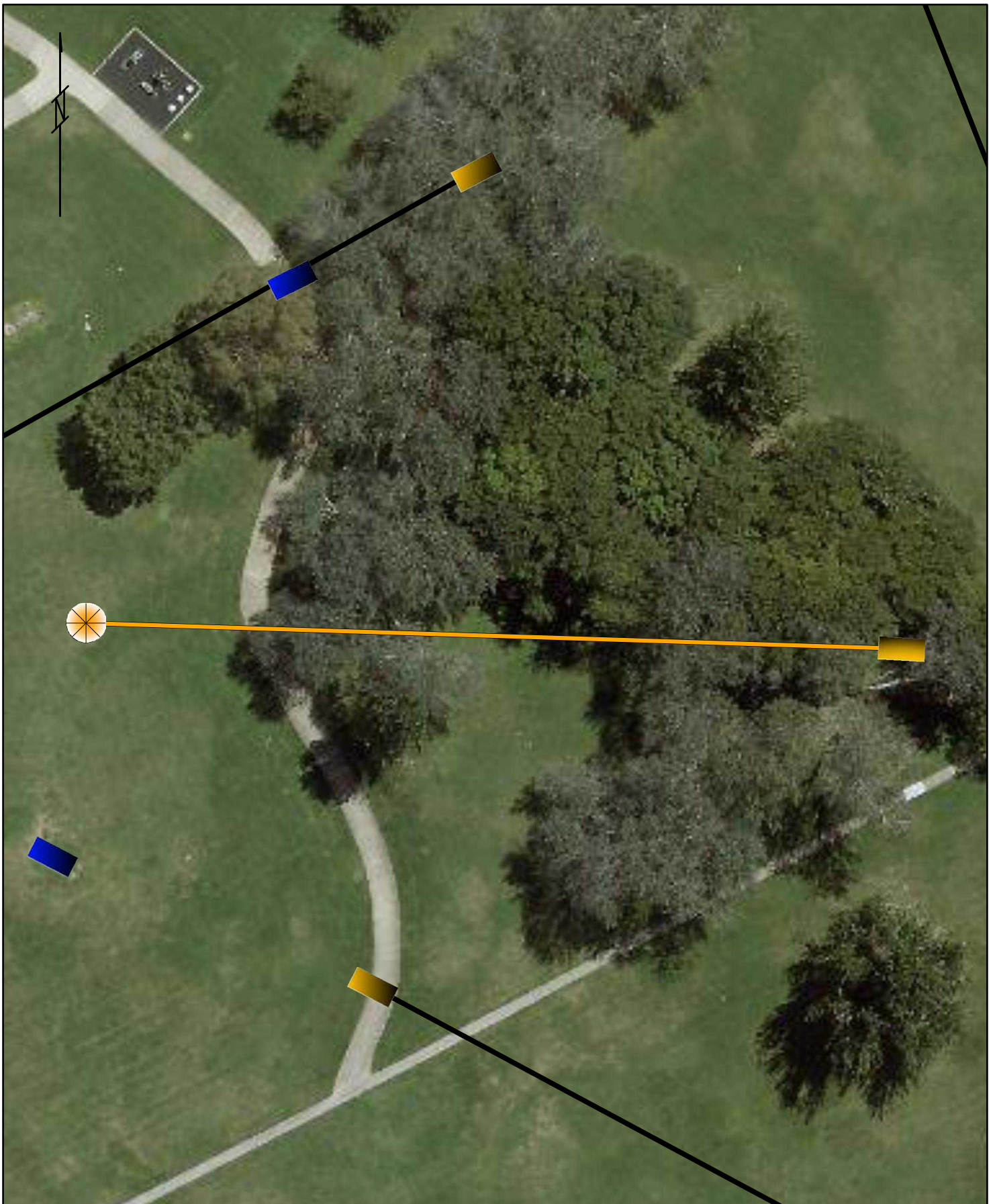
Hole 9

Par 3 85m

Notes:

Triple mandatory right of tree, below branch and left of tree on right side. DZ marked in middle under branch.

OB left of path and right of inside line of bollards (road).

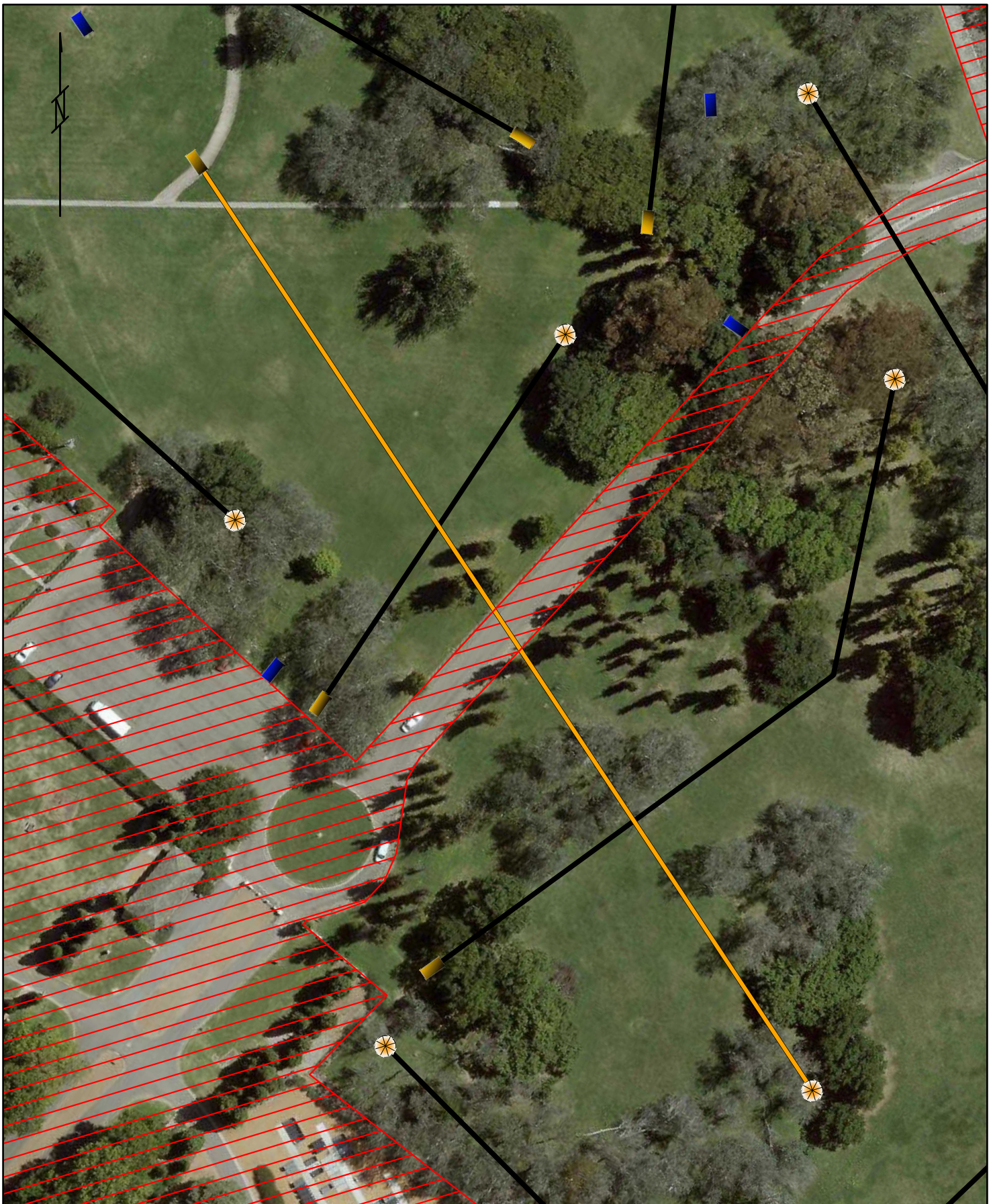


Hole 10

Par 3 81m

Notes:

Tight lines. No OB to speak of.



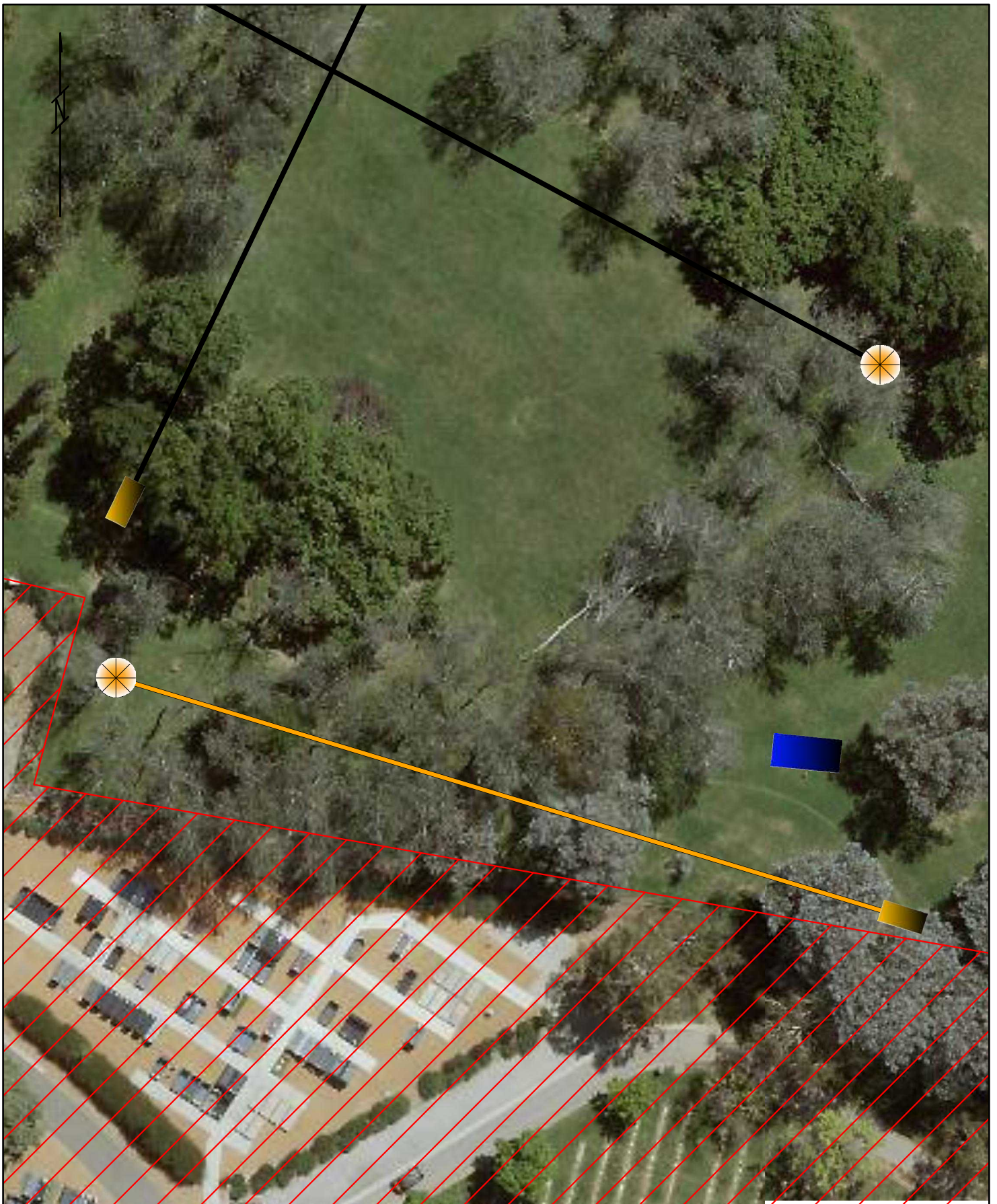
Hole 11

Par 4 217m

Notes:

OB on the road and carpark in-between bollards. Line is inside line of bollards (inbounds side of bollard)

Spotter required for visuals of entering cars.

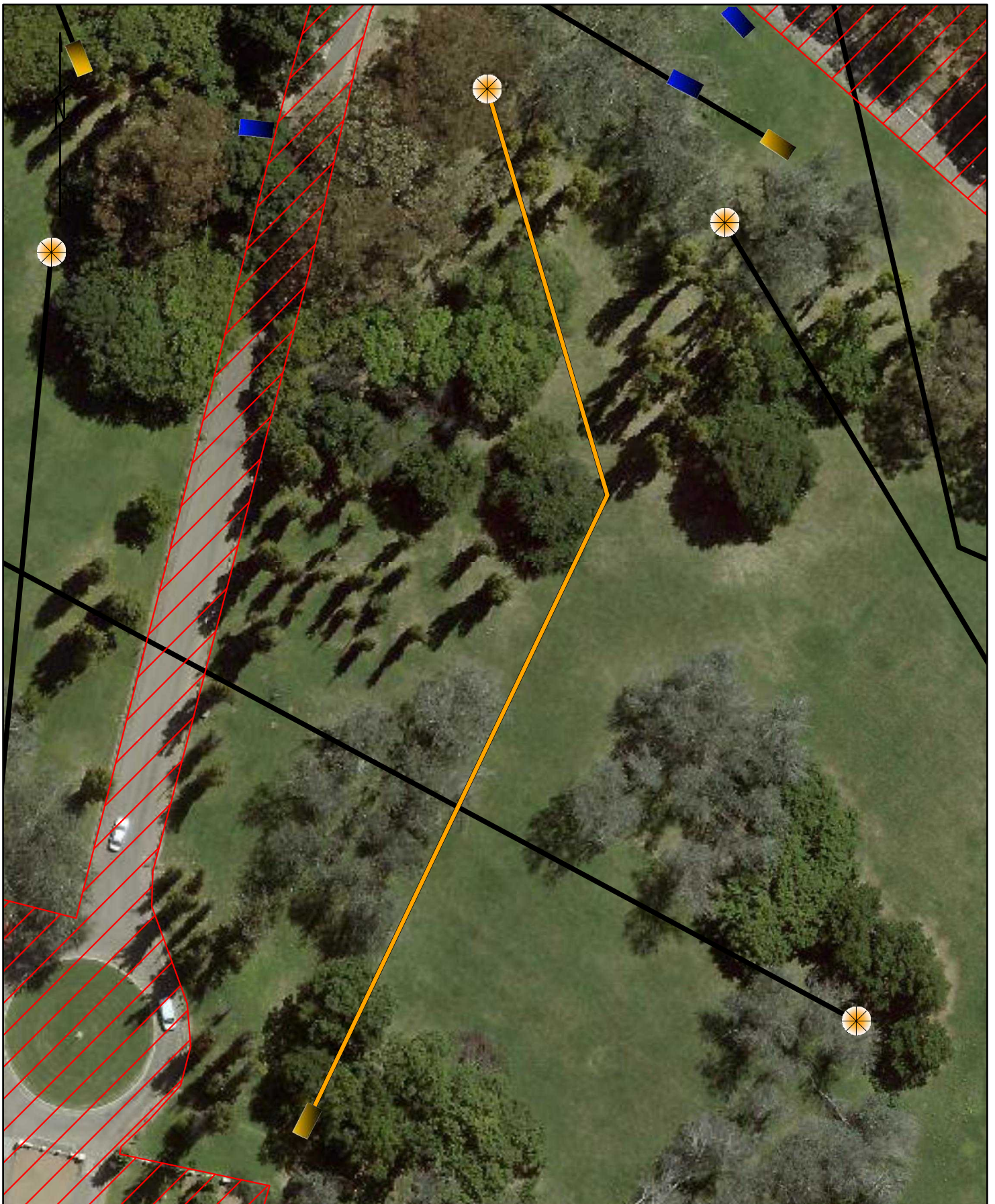


Hole 12

Par 3 82m

Notes:

Concrete garden edge on left and long, ~1m inside fence line marks OB.



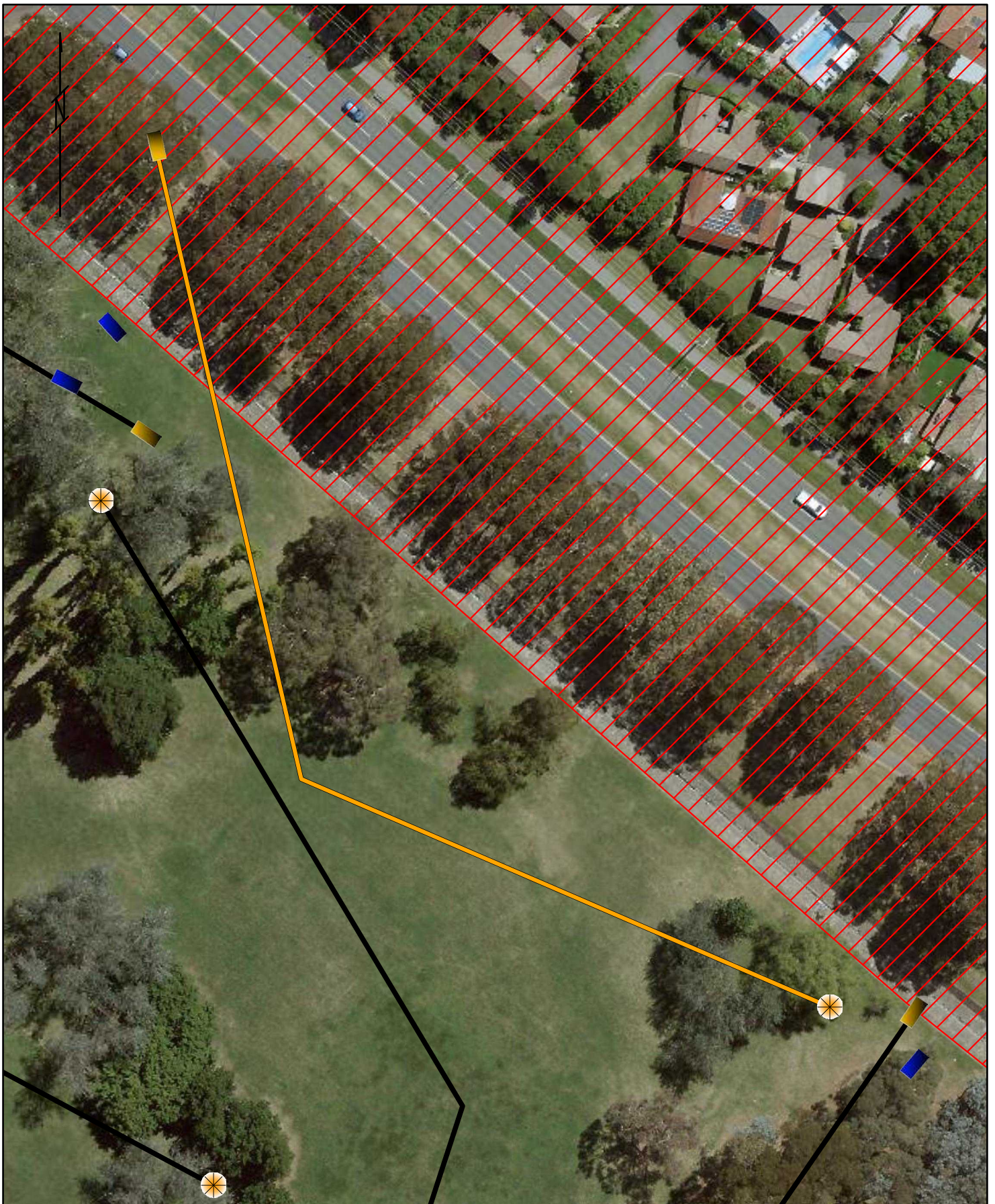
Hole 13

Par 4 155m

Notes:

Plays off the same tee as Blue 13.

Bollards on left OB (inside line).
Stormwater drain long OB.



Hole 14

Par 4 199m

Notes:

Stormwater drain and beyond is OB. Teeing off from island. If a player is OB off the tee normal OB rules apply.

Players may also use rule 806.02.D.04 - (Mark) a lie designated by a marker disc placed on the playing surface up to one meter away from the point on the out-of-bounds line nearest the position of the disc.

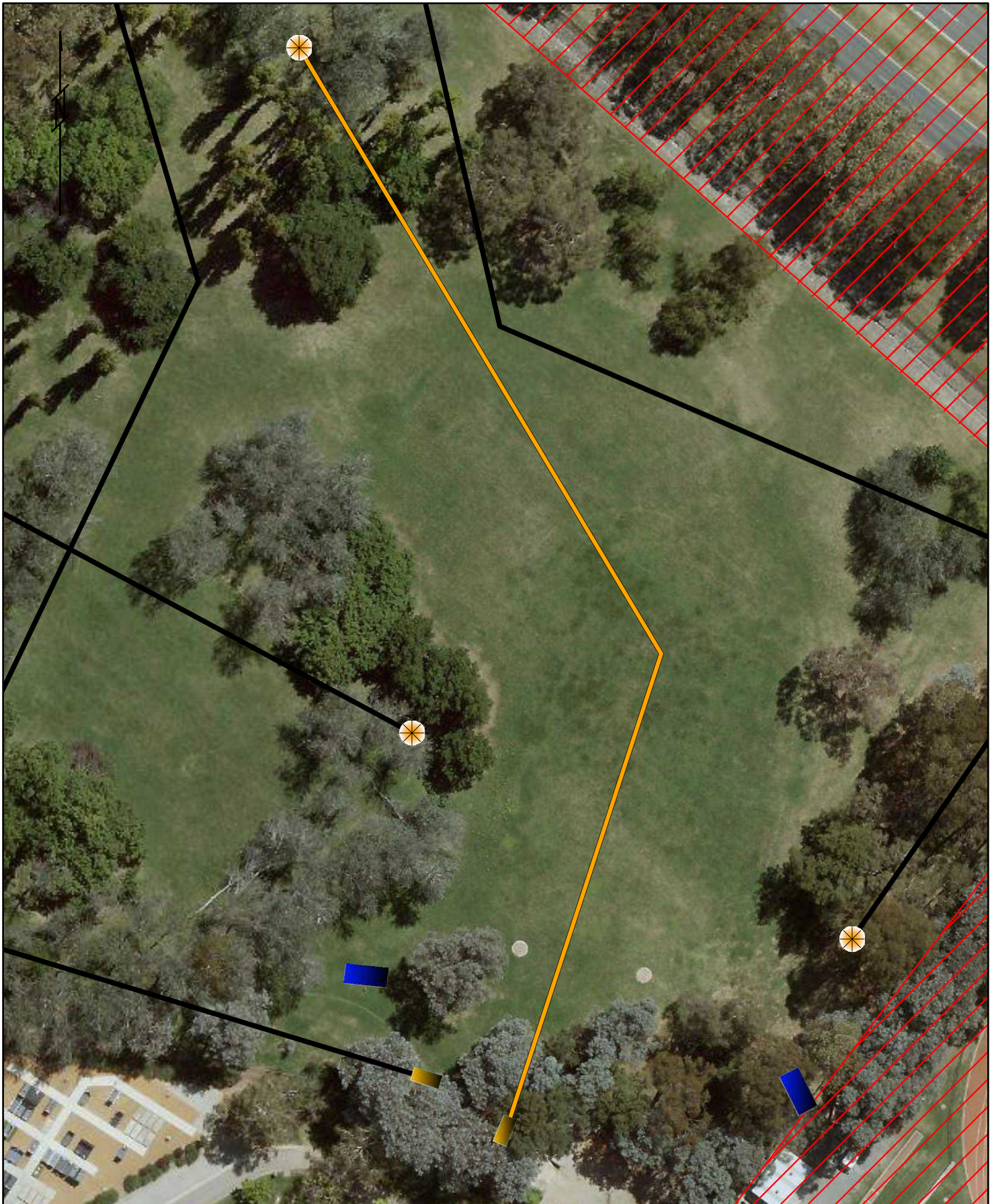


Hole 15

Par 3 73m

Notes:

OB over fence on left and stormwater drain and beyond behind tee. Mando on right, must pass to the left of it. DZ marked next to tree.

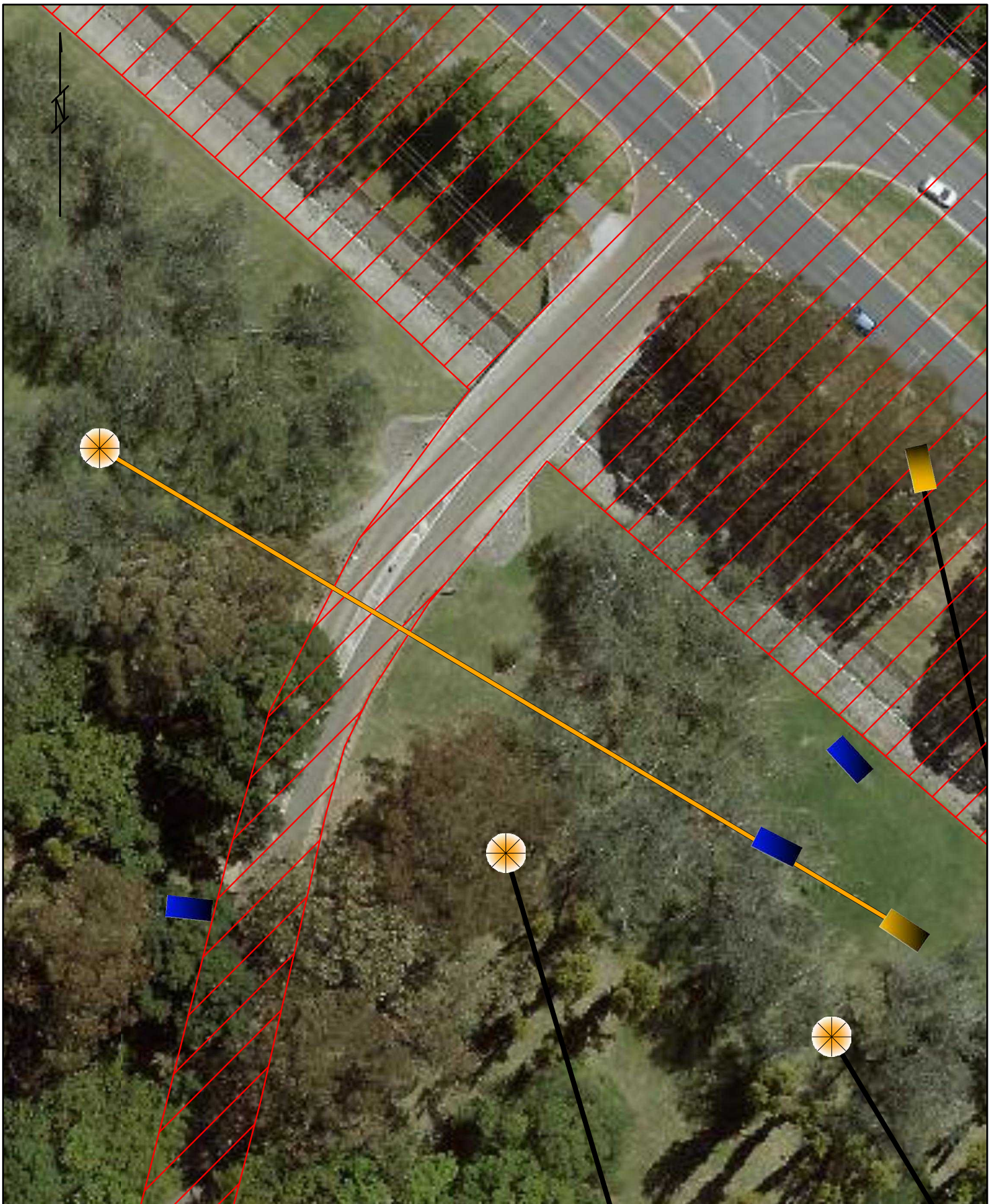


Hole 16

Par 4 196m

Notes:

OB stormwater drain and beyond. OB bollards on edge of access road.



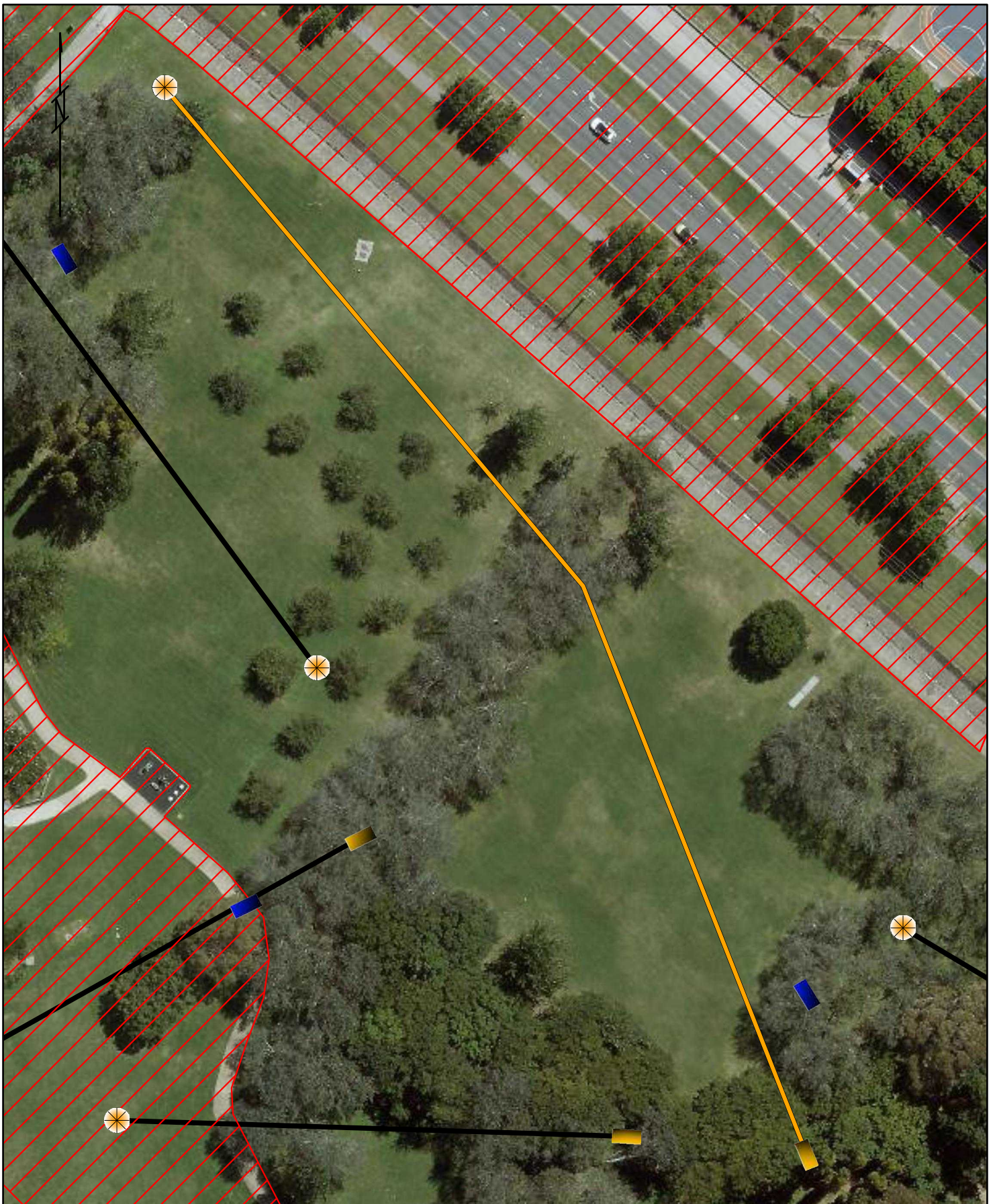
Hole 17

Par 3 94m

Notes:

OB on road between the bollards. Inbounds side of bollards marks the line. OB stormwater drain on right.

Spotter required to check landing zone and road.



Hole 18

Par 4 205m

Notes:

OB stormwater drain and beyond on right.
OB path and beyond long of basket.